

VW Transporter T6 t5 TDI 102PS GRAPE YELLOW AURORA EDITION CAMPERVAN 4 BERTH POPTOP



General Info

Engine:	2.0 Diesel Manual
Price:	Reserved
Body Type:	4 Dr B Class Mhome
Owners:	1
Mileage:	5,000
Reg Date:	September 2018 (68)
Colour:	GRAPE YELLOW

Vehicle Features

Not Specified

Vehicle Description

""BUILD No. 191""INTRODUCING OUR STUNNING SPECIAL ORDER CALIFORNIA BEACH COLOUR GRAPE YELLOW ""AURORA EDITION""VW T6 SWB HIGH SPEC 102PS 4 BERTH CAMPERVAN WITH POPTOP,BUSINESS PACK,AIRCON,REAR PARK SENSORS,HIGHLINE MULTIFUNCTIONAL LEATHER AND PIANO BLACK STEERING WHEEL AND GEAR KNOB,POWER LATCHING DOOR,2X SINGLE FRONT CAPTAINS SEATS WITH SWIVELS,TAILGATE,FRONT CAB CARPET,OUR UPGRADED LOWER SEAT BED SYSTEM,UPGRADED SPECIALLY BUILT ITALIAN FONDMETAL ALLOYS IN BLACK MATT,COLOUR CODING TO ALL CROME AND NIGHT HEATER+OUR AURORA RANGE IS OUR HIGHEST SPEC RANGE OF VW CAMPERVANS SO FAR,SUPPLIED AS STANDARD WITH ALL THE SPEC FROM OUR STANDARD RANGE PLUS ON THIS RANGE WE OFFER AN UNRIVALED ULTRA MODERN CUTTING EDGE DESIGN BEAUTIFULLY EDGE BANDED FURNITURE KIT+VANSHADES EXCLUSIVE BLIND PODS INSTEAD OF CURTAINS+CALIFORNIA STYLE OUTSIDE CAMPING TABLE IN SLIDING DOOR+AURORA EDITION BRANDING



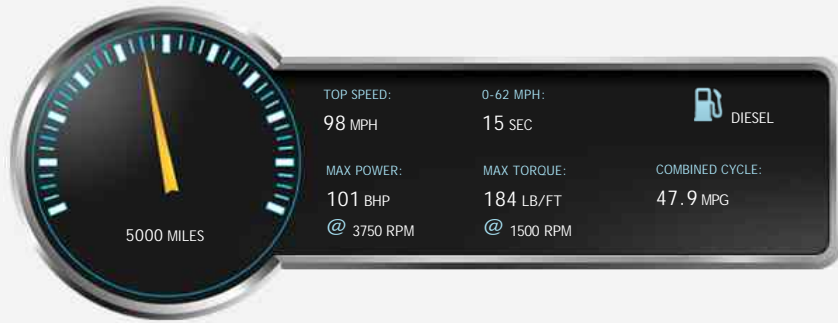
Status 1 Automotive Ltd, Providence Works, Smithies Moor Lane, Birstall, Batley, West Yorkshire, WF17 9AR

Tel: 01924 422248 - Web: www.status1automotive.co.uk

Opening Hours: Mon - Fri 9am - 5:30pm | Sat By appointment | Sun Closed

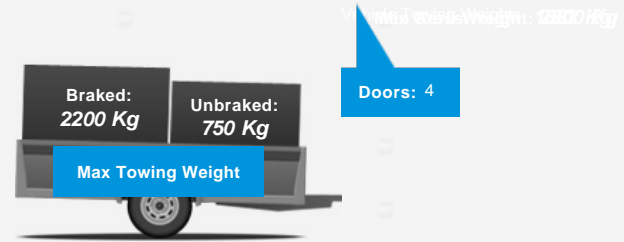
Whilst every effort is made to represent details accurately on our Web Site, variations, errors or omissions may occur and so the information contained herewith does not constitute an offer for sale of any particular vehicle, accessory or specification. Customers are advised to contact us to confirm vehicle features & details

## Performance & Engine



Technical Data  
Fuel Type: Diesel  
Wheels: 18  
Engines: 4  
In-Line  
1868 Cc,  
Turbo  
Charged,  
DOHC

## Weights & Measures



Vehicle Dimensions  
Weight

Vehicle Dimensions

Load Length: -- mm

Seats: --

Vehicle Length

Length: 4892 mm

\*Including mirrors

## Safety

NCAP Adult Rating: No Data  
NCAP Child Rating: No Data  
NCAP Pedestrian Rating: No Data  
NCAP Safety Assist: No Data  
NCAP Overall Rating: No Data



## Fuel Economy

## Running Costs

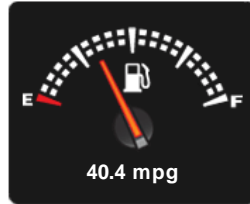
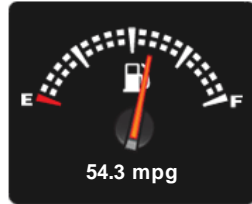
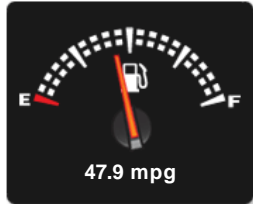
CO<sub>2</sub> emission figure (g/km)

VED band and CO<sub>2</sub>

Combined

Extra Urban

Urban



No Data

## Insurance & Security

Insurance Group

Insurance Group  
(1-20)

Security



Immobiliser

Euro Status

