

VW Transporter T6 t5 TDI T/GATE A/C H/LINE CAMPERVAN 4 BERTH POPTOP



General Info

Engine:	2.0 Diesel Manual
Price:	Sold
Body Type:	4 Dr B Class Mhome
Owners:	2
Mileage:	1,000
Reg Date:	May 2018 (18)
Colour:	bamboo garden green

Vehicle Features

Not Specified

Vehicle Description

""VW T6 SWB 2018 18 REG 102PS HIGHLINE STUNNING BAMBOO GARDEN GREEN 4 BERTH CAMPERVAN WITH POPTOP ,AIRCON, TAILGATE,EBERSPACHER NIGHT HEATER, VW FACTORY TWIN SINGLE CAPTAINS SEATS WITH FACTORY SWIVELS,FACTORY FRONT CAB CARPET,FULL GREY SPORT DIAMOND QUILTED LEATHER WITH WHITE QUILTED STITCH INCLUDING REAR SLIDING SEAT BED,EXTERIOR SPORT STYLING,LOWERED SUSPENSION,SIDE BARS AND 20" ALLOYS+FACTORY COLOUR CODED+AIRCON+CRUISE CONTROL+PARK ASSIST+BLUETOOTH PHONE AND MUSIC STREAMING+HIGHLINE PIANO BLACK AND LEATHER MULTIFUNCTIONAL STEERING+HEATED FRONT SCREEN+FRONT AND PASSENGER CAPTAIN SEATS WITH ARM RESTS AND TWIN SWIVELS""PLEASE VISIT OUR WEBSITE: STATUS 1 AUTOMOTIVE FOR FULL DETAILS AND FURTHER VEHICLES" 3 QUARTER ROCK AND ROLL SLIDING REAR SEAT BED BELTED FOR 2 WITH MATCHING BESPOKE LEATHER+4 BERTH POPTOP+TOP OF RANGE DOMETIC CRX 50 12V FRIDGE AND FREEZER+TWIN HOB AND SINK+MINI GRILL+EXCLUSIVE CARBON WOOD



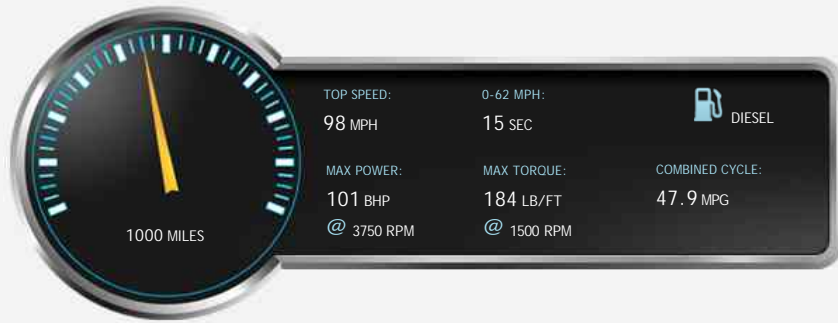
Status 1 Automotive Ltd, Providence Works, Smithies Moor Lane, Birstall, Batley, West Yorkshire, WF17 9AR

Tel: 01924 422248 - Web: www.status1automotive.co.uk

Opening Hours: Mon - Fri 9am - 5:30pm | Sat By appointment | Sun Closed

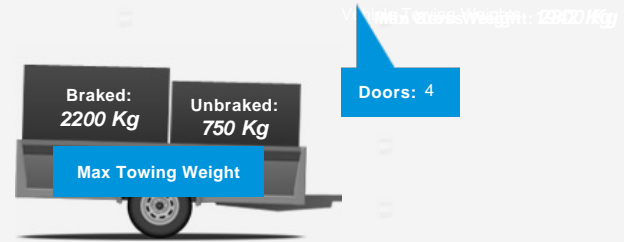
Whilst every effort is made to represent details accurately on our Web Site, variations, errors or omissions may occur and so the information contained herewith does not constitute an offer for sale of any particular vehicle, accessory or specification. Customers are advised to contact us to confirm vehicle features & details

## Performance & Engine



Technical Data  
Fuel Type: Diesel  
Drive Type: Front-wheel drive  
Wheels: 18  
Engines: 4  
In-Line  
1868 Cc,  
Turbo  
Charged,  
DOHC

## Weights & Measures



Vehicle Dimensions  
Weight

Vehicle Dimensions

Load Length: -- mm

Seats: --

Vehicle Length

Length: 4892 mm

\*Including mirrors

## Safety

NCAP Adult Rating: No Data  
NCAP Child Rating: No Data  
NCAP Pedestrian Rating: No Data  
NCAP Safety Assist: No Data  
NCAP Overall Rating: No Data



## Fuel Economy

## Running Costs

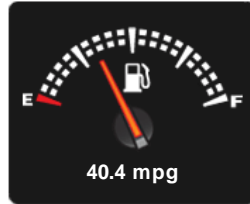
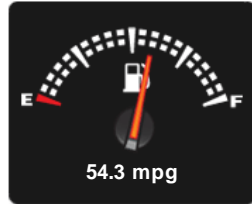
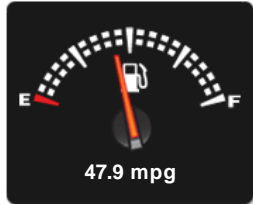
CO<sub>2</sub> emission figure (g/km)

VED band and CO<sub>2</sub>

Combined

Extra Urban

Urban



No Data

## Insurance & Security

Insurance Group

Insurance Group  
(1-20)

Security



Immobiliser

Euro Status

