

Mercedes Sprinter 313 CDI High Roof LWB 6 Seater Crewcab NO VAT

Reserved



General Info

Engine:	2.1 Diesel Manual
Price:	Reserved
Body Type:	4 Dr Van LWB
Owners:	4
Mileage:	89,000
Reg Date:	November 2012 (62)
Colour:	White

Vehicle Features

Not Specified

Vehicle Description

NO VAT - NEW SHAPE FACELIFT LONG WHEELBASE HIGH ROOF 6 SEAT CREWCAB DIESEL MODEL, FINISHED IN SOLID WHITE WITH A BLACK CLOTH INTERIOR, 6 SPEED MANUAL TRANSMISSION, BLUETOOTH PHONE CONNECTIVITY, REVERSING CAMERA, SECURITY SLAM/DEADLOCKS FITTED ON ALL DOORS WITH SPARE SET OF KEYS, REMOTE CENTRAL LOCKING, RETURNING 33.6MPG COMBINED, POWER STEERING, CRUISE CONTROL, NEW CATEGORY A ALARM FITTED, PLYLINED, 130BHP, ELECTRIC WINDOWS, DRIVERS ARMREST, MULTI FUNCTION STEERING WHEEL, EURO 5, RADIO/CD PLAYER, SIDE SLIDING/REAR LOADING DOORS, AUX CONNECTION FOR MUSIC PLAYBACK, 16 INCH WHEELS WITH GOOD TYRES ALL ROUND, MOT UNTIL FEBRUARY 2019, COMES WITH 2 KEYS AND ALARM FOBs, RECORDED AS CATEGORY D MEANING IT HAD VERY LIGHT PANEL DAMAGE AND WAS REPAIRED AT A PROFESSIONAL BODY SHOP TO A HIGH STANDARD, VOSA WARRANTED MILES, PART EXCHANGE WELCOME, FINANCE AVAILABLE, COMES WITH A 3 MONTH WARRANTY, PLEASE CALL OUR SALES LINE FOR MORE

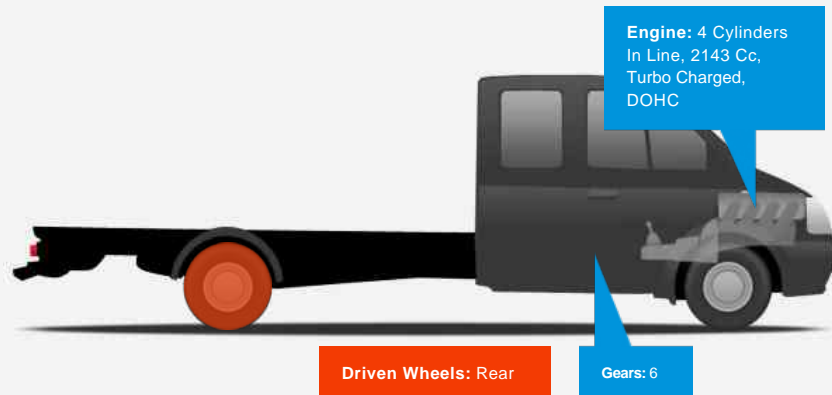
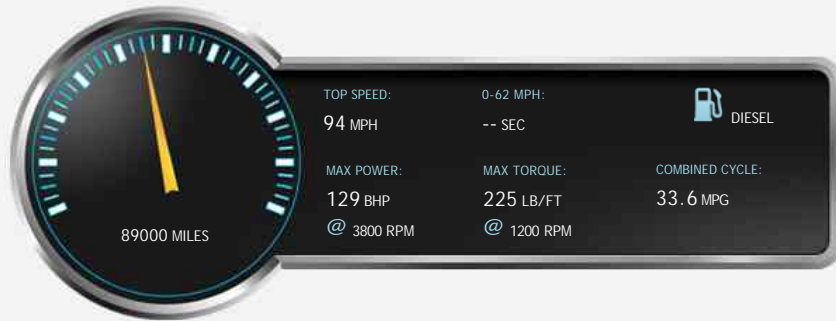


Surrey Hills Cars, Bordon Trading Estate, Old Station Way, Bordon, Hampshire, GU35 9HH

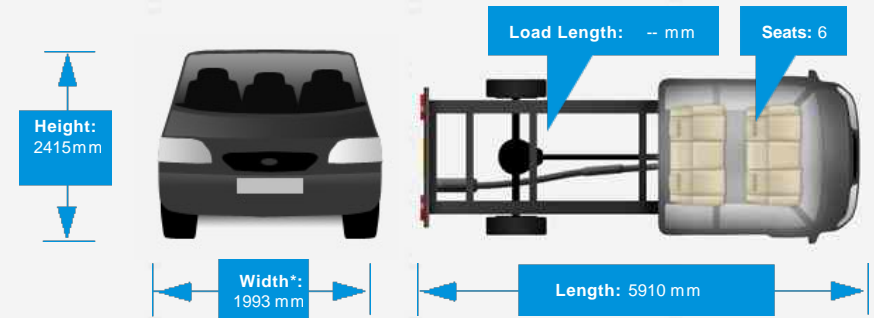
Tel: 01420 489944 - Web: www.surreyhillscars.co.uk

Opening Hours: Mon - Sat 10am - 5pm | Sun 12pm - 2pm

Performance & Engine



Weights & Measures



*Including mirrors

Safety

NCAP Adult Rating: No Data
NCAP Child Rating: No Data
NCAP Pedestrian Rating: No Data
NCAP Safety Assist: No Data
NCAP Overall Rating: No Data



Fuel Economy

Running Costs

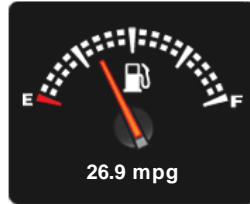
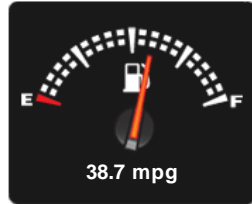
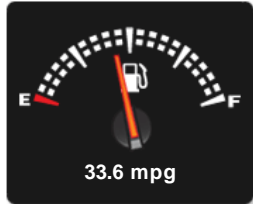
CO₂ emission figure (g/km)

VED band and CO₂

Combined

Extra Urban

Urban



No Data

Insurance & Security

Euro Status



Insurance Group
(1-20)

Security



Immobiliser