

Ferrari California T Extended Warranty

Sold



General Info

Engine:	3.9 Petrol Semi-Automatic
Price:	Sold
Body Type:	2 Dr Convertible
Owners:	2
Mileage:	18,500
Reg Date:	May 2015 (15)
Colour:	Bianco Italia With Special Livery

Vehicle Features

- > AFS - Advanced Frontlighting...
- > Carbon fibre steering wheel with...
- > Inner & outer electrochromic rear...
- > Carbon Dash Inlays
- > Chromed front grille
- > Colour upon request for Alcantara®...
- > Leather upholstery for headliner
- > Apple CarPlay
- > Hi-Fi premium system
- > Bi-Xenon
- > Carbon Fiber Driver Zone+Steering...
- > Colour upon request for Alcantara®...
- > DAB Radio

Vehicle Description

Merese are delighted to offer this UNIQUE TAYLOR MADE FERRARI CALIFORNIA 3.9 T- Finished In Special Order BIANCO ITALIA WITH SPECIAL LIVERY- Leather Crema- Central Stripe Of Seats In Rosso Alcantara- Inserts Around The Seats And On Headrests In Red Alcantara And Rear Cushions- Rear Bench In Rosso Alcantara- Tunnel In Black Leather With Central Part Of Armrest In Red Alcantara- Door Panels In Black Alcantara- (Stitching In Crema On Crema Parts- Red On Black Parts And Black On Red Parts)- Carvallino Stitched- Black Alcantara Carpet- Dashboard Central Trim And Radio Frame In Carbon Fibre- F1 Trim Buttons Painted In Red White And Blue- Fully Electric Ventilation Seats- Backbone Style Seats Front And Rear- Carbon Fibre Driver Zone And Steering Wheel With LED- Carbon Fibre Central Tunnel- Air Vent Tubes In Rosso- Central Seat Zones In Nero- Lower Dash In Nero- Central Tunnel In Nero With Special Request Armrest In Rosso- Door Panel Nero Alcantara- Embroidered Prancing Horse On Headrest- Floor Mats

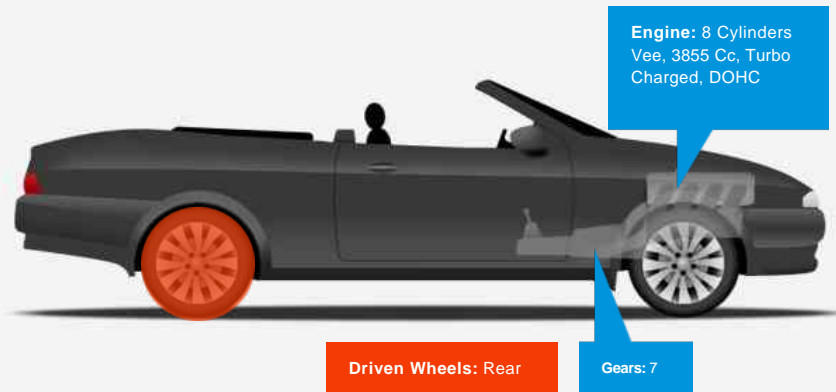
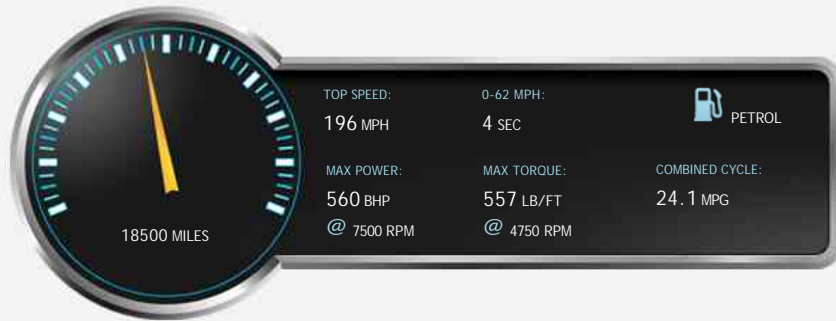


Merese Motors, Chelford Road, Nether Alderley, Cheshire, SK10 4SZ

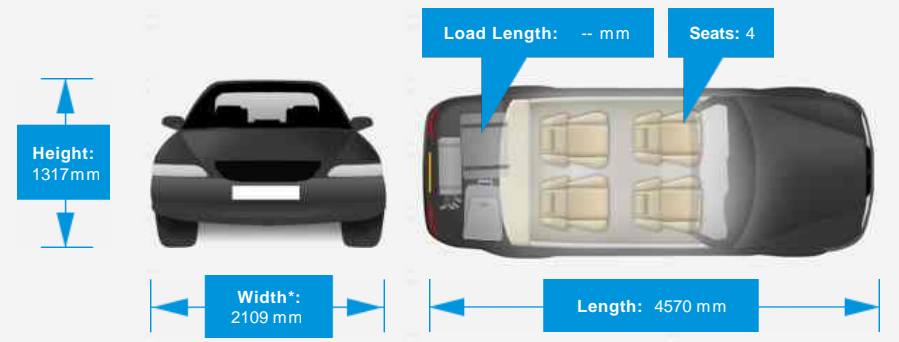
Tel: 01625 322200 - Fax: 01565 830 846 - Mob: 07792 553 639 - Web: www.meresidemotors.com

Opening Hours: Mon - Fri 9am - 6pm | Sat 10am - 5pm | Sun By Appointment Only

Performance & Engine



Weights & Measures



*Including mirrors

Safety

NCAP Adult Rating: No Data
NCAP Child Rating: No Data
NCAP Pedestrian Rating: No Data
NCAP Safety Assist: No Data
NCAP Overall Rating: No Data



Fuel Economy

Running Costs

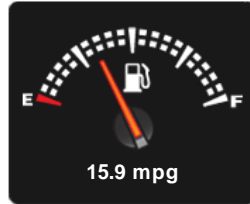
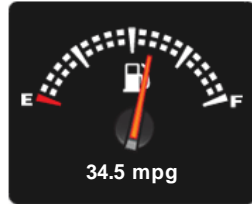
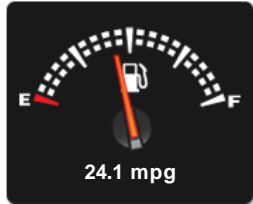
CO₂ emission figure (g/km)

VED band and CO₂

Combined

Extra Urban

Urban



No Data

Insurance & Security

Euro Status

Insurance Group
(1-20)



Security



Immobiliser