

Lunar Landstar RL 2 Berth Campervan for sale

£56,995



General Info

Engine:	2.1 Diesel Automatic
Price:	£56,995
Body Type:	3 Dr B Class Mhome
Owners:	
Mileage:	2,608
Reg Date:	March 2016 (16)
Colour:	Grey

Vehicle Features

Not Specified

Vehicle Description

Based on the latest Mercedes-Benz Sprinter, the Lunar Landstar RL is a long, well equipped van conversion with automatic transmission.

At 7.12m, the Sprinter provides a long base for a panel van conversion. It's a dream to drive, showing all the refinement of a Mercedes-Benz. It holds the road smoothly, so there's very little noise from the habitation area.

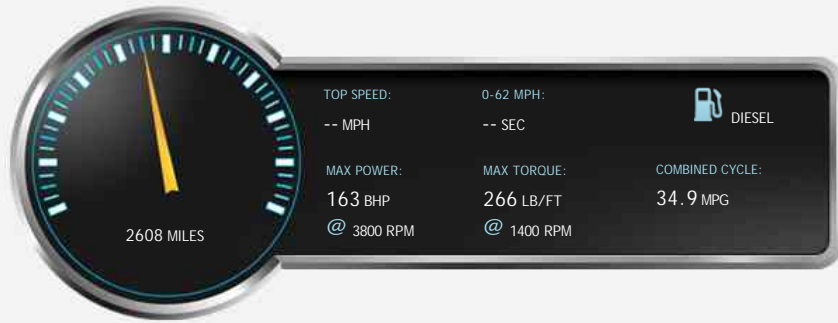
The Lunar Landstar RL's lounge is bright and airy, and the headroom is very impressive. Couple that with unfussy, modern decor and you get a great feeling of spaciousness. The rear lounge has two settees, which are long enough to be used as single beds, or will convert easily into a large double.



ScotMotorhomes, Ruthvenfield Road, Inveralmond Industrial Estate, Perth, Perth and Kinross, PH1 3XF
 Tel: 01738 443628 - Web: www.scotmotorhomes.co.uk

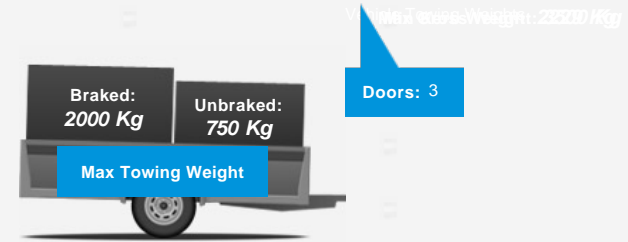
Opening Hours: Mon - Fri 9am - 5pm | Sat 9am - 4pm | Sun 12pm - 4pm

Performance & Engine



Transmission: Automatic
Rear-wheel drive
Wheels: 16
Brakes: Disc
2143 cc, Turbocharged, DOHC

Weights & Measures



Vehicle Dimensions
Weight

Vehicle Dimensions

Load Length: -- mm

Seats: --

Vehicle Length

Length: -- mm

*Including mirrors

Safety

NCAP Adult Rating: No Data
NCAP Child Rating: No Data
NCAP Pedestrian Rating: No Data
NCAP Safety Assist: No Data
NCAP Overall Rating: No Data



Fuel Economy

Running Costs

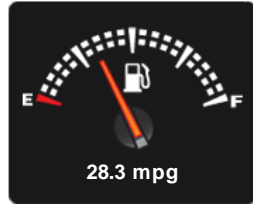
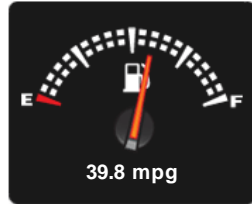
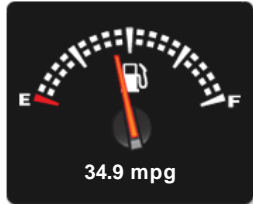
CO₂ emission figure (g/km)

VED band and CO₂

Combined

Extra Urban

Urban



No Data

Insurance & Security

Insurance Group

Insurance Group
(1-50)

Security
(Thatcham Approved)



Immobiliser

Euro Status

